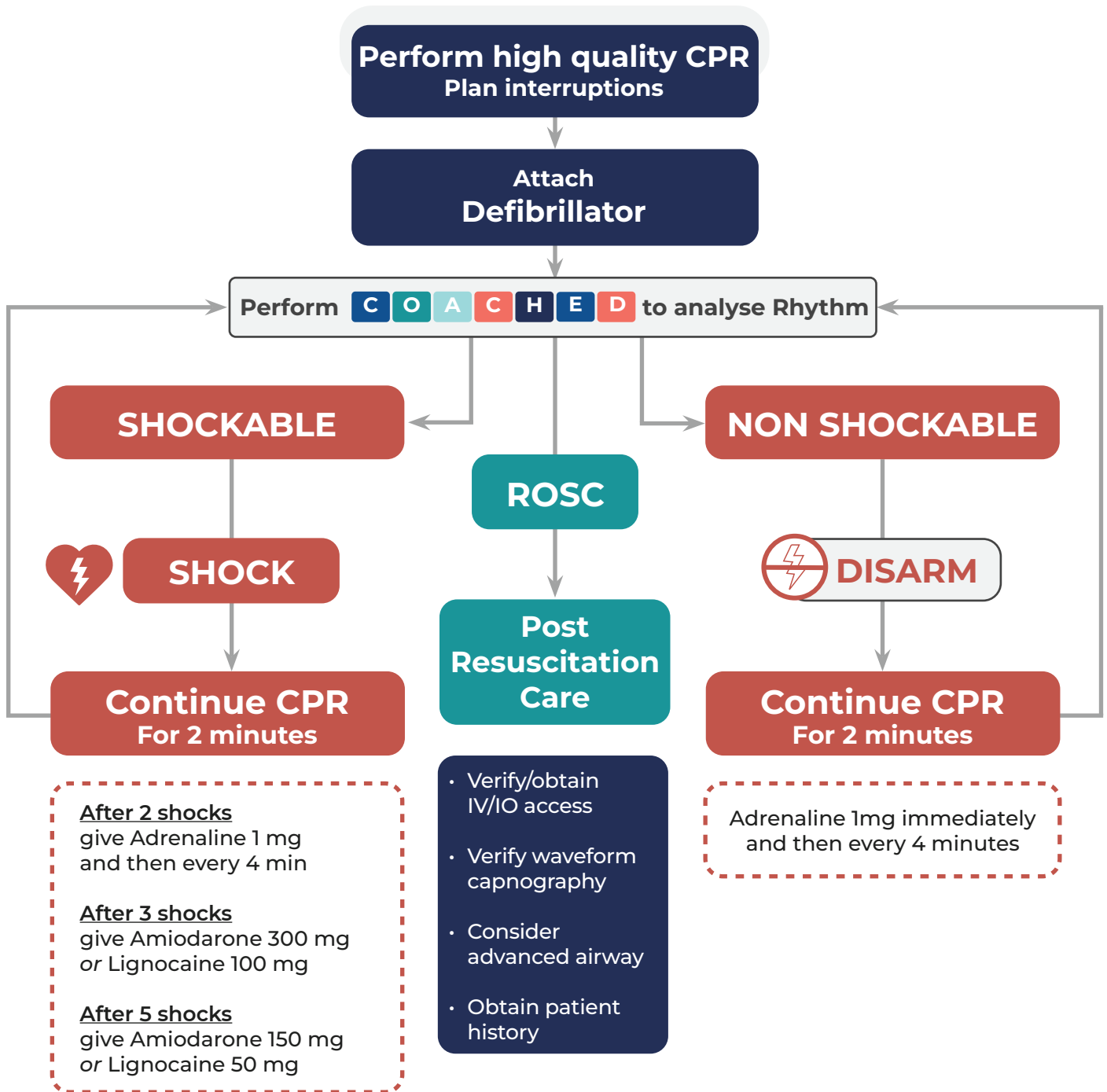


Adult Advanced Life Support



Consider and correct reversible causes (4Hs and 4Ts; or special circumstances)

- Hypoxia
- Hypovolaemia
- Hypothermia or hyperthermia
- High or low electrolytes (K^+ , Ca^{2+} , Mg^{2+}) and metabolic disorders
- Tension pneumothorax
- Tamponade
- Toxins
- Thrombosis (pulmonary or coronary)

Post Resuscitation Care

- Re-evaluate ABCDE
- Treat precipitating cause
- Optimise oxygenation & ventilation SpO_2 94-98%, normocapnia
- Optimise perfusion
- Aim for normoglycaemia and normothermia
- 12 lead ECG plus CXR